

NOMAD

Mid-term review 22nd and 23rd June 2011



Workshop objectives:

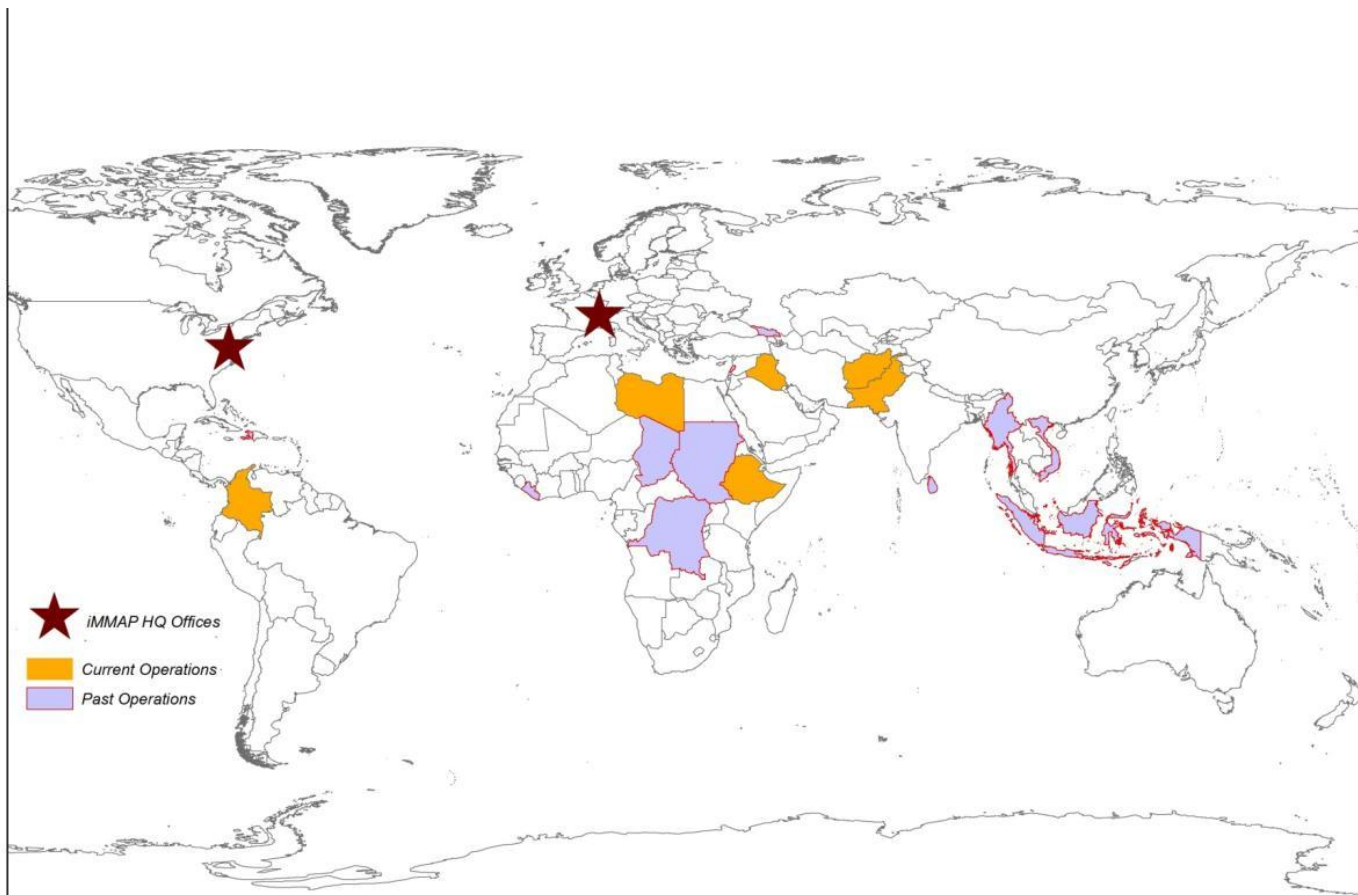
1. Introduction and presentation of the NOMAD service and partners
2. Review of Pilot 1 lessons learned
3. Demonstration of tools
- 4. Feedback from users (you) on way forward**



Ground rule:

“stop talking while I’m interrupting!”

iMMAP: supporting the humanitarian community by providing operational information management





HUMANITARIAN OPERATIONS
MOBILE ACQUISITION OF DATA

NOMAD

Technological development

**OASIS
HIS
Network Analysis
Commodity tracking systems**

**IMSMA
HIM training
ESRI Tutorial
IM strategy development
-PAICMA
-NDMA**

Training and
Capacity Building

Preparedness

Humanitarian
Response
Cycle

Re-development

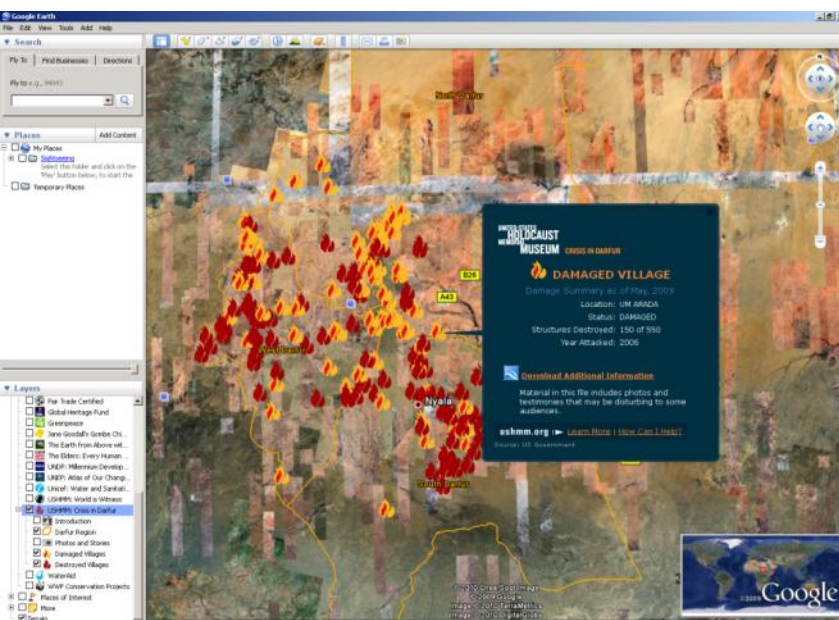
Response

Operational
Support

**Stand-by partnerships
-OCHA
-WFP
-FAO**

Ad hoc support





1. Increasing appreciation at all levels of decision-making of the utility of geographic information (donors, managers, field staff)
2. Increase demand for up-to-date geographic information (satellite imagery, GPS data)
3. Progress made in geographic information structures and processes (standardisation of formats, metadata, etc)
4. Development of new, integrated, user-friendly tools to support this increased demand

Whateverelse

PostGIS FrontLineSMS EpiSurveyor

Open-source

Proprietary

Geoportal

OASIS

Thuraya

ODK

Android

Imogene

PostGres

ABCS@t

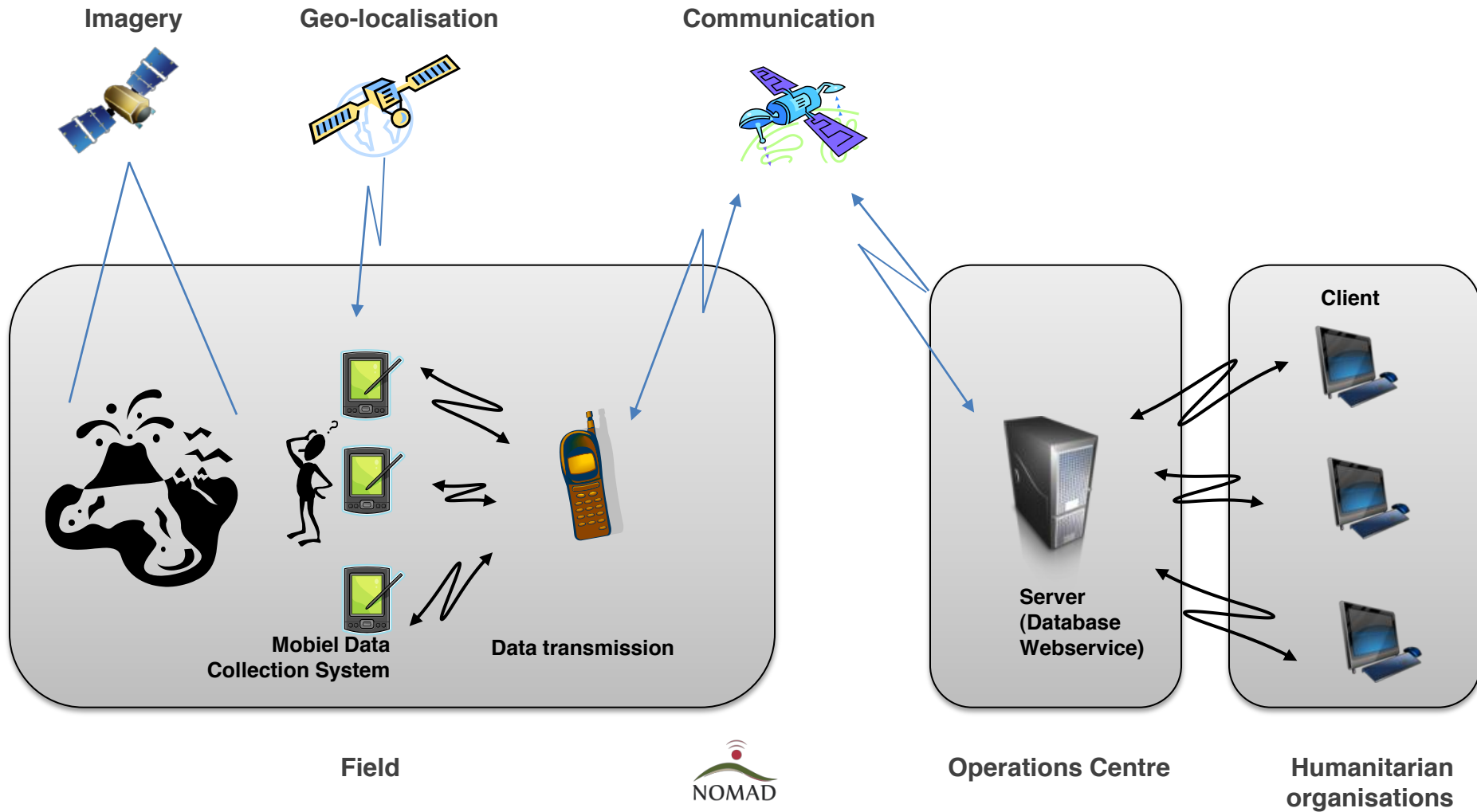
qGIS

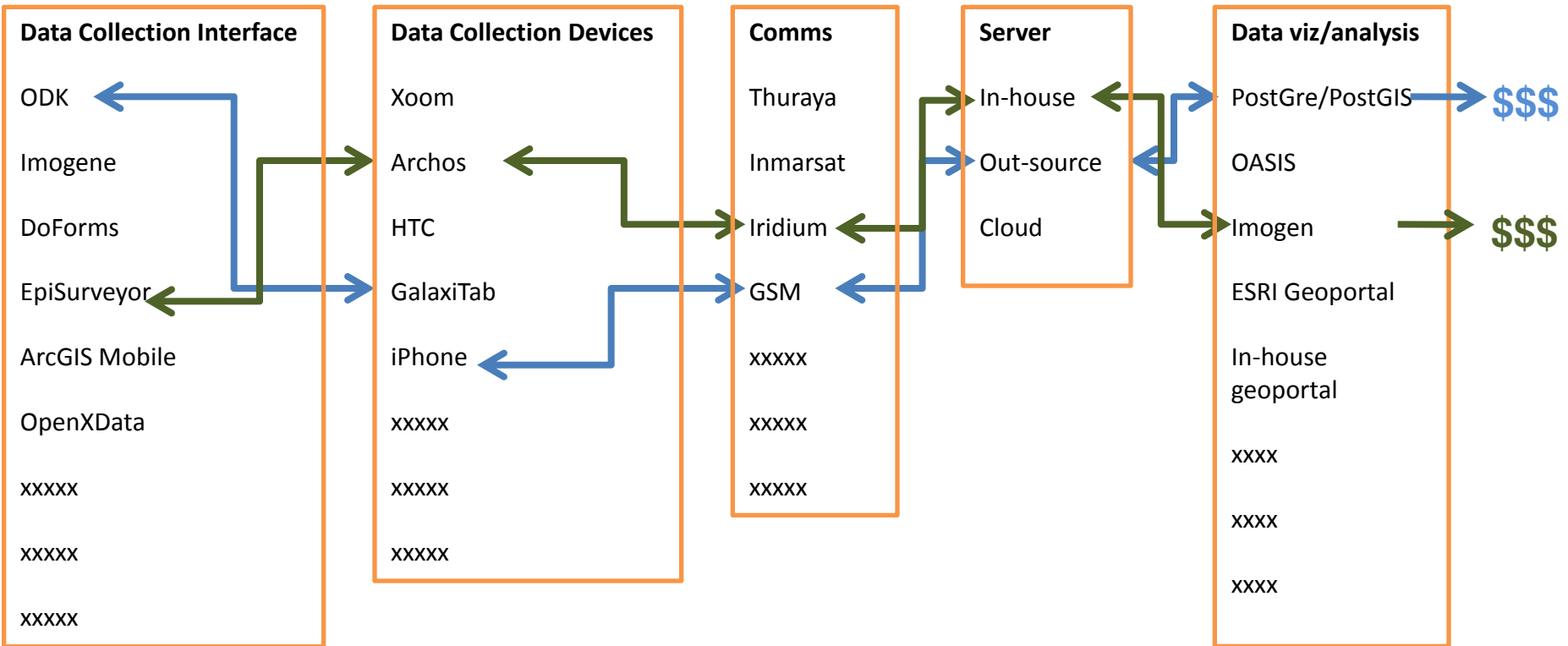


NOMAD is a service that aims to provide the humanitarian community with:

- Design support
- Development support
- Implementation support

for remote field data collection projects





What NOMAD *is:*

- Clarifying the landscape
- Reference point
- Consultancy
- A group of experts
- Developers
- Operational experience
- Humanitarian focus
- Not-for-profit

What **NOMAD** *is NOT*:

- A fixed technological solution
- Yet another data collection system in the mix
- Thematic experts (we work to your requirements)

1. Coordination
 - iMMAP



2. Technical development
 - iMMAP
 - MEDES
 - Auvea Ingénierie



3. User partners
 - ETHIOPIA: World Food Programme
 - ??...



4. Technological review and service definition
 - CartONG
 - Auvea



5. Financial support (service development and coordination)
 - Centre National d'Etudes Spatiales



Food delivery monitoring

